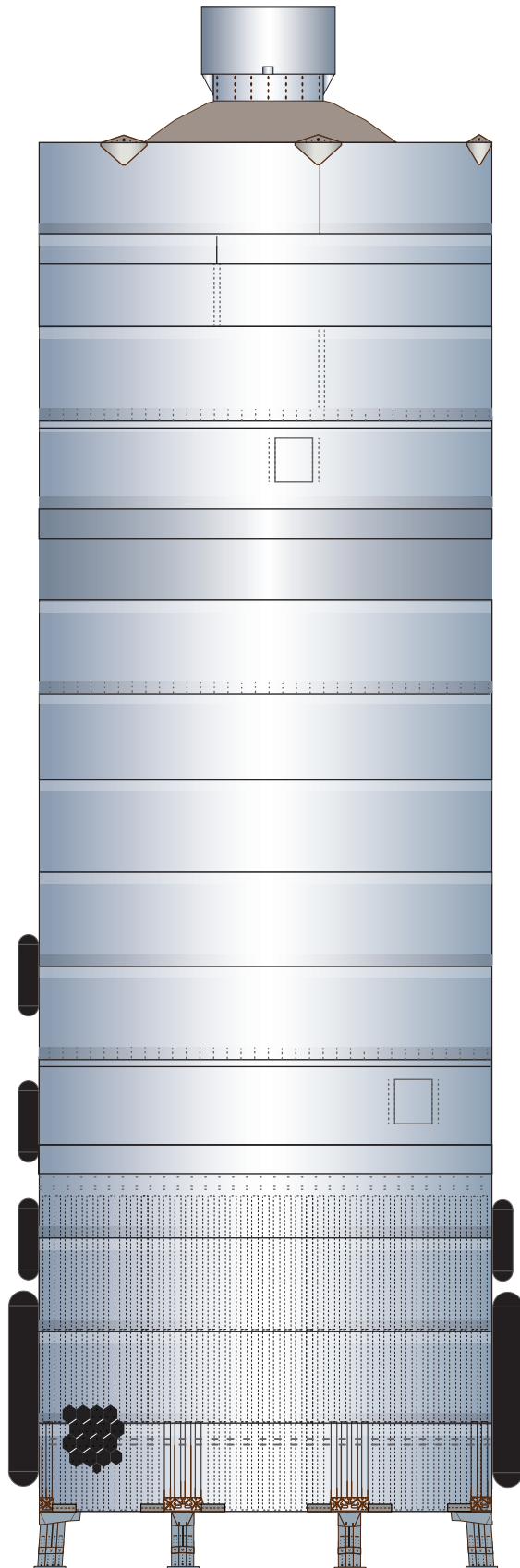




1:100 Scale

# SN-5



S  
T  
A  
R  
S  
H  
I  
P

Designed by Alfonso X Moreno  
©2020 Not for commercial use

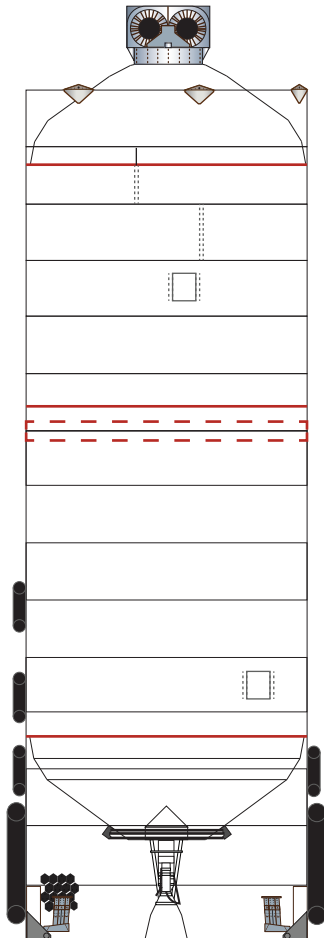


# SpaceX Starship SN-5

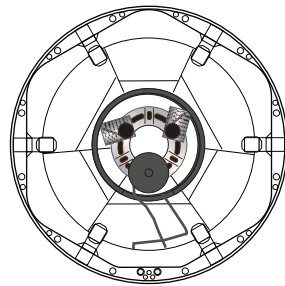
REFERENCE

Print on Cardstock (110 lbs)

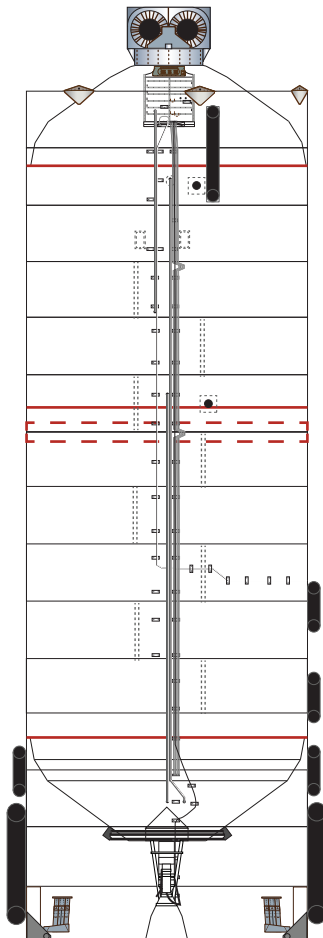
NOT TO SCALE



Front



Back



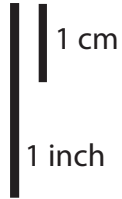
Back



# SpaceX Starship SN-5

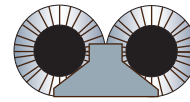
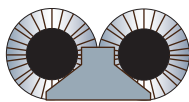
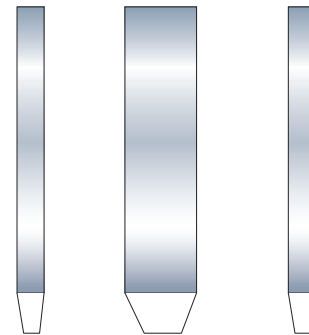
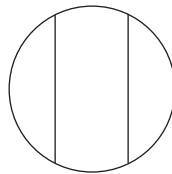
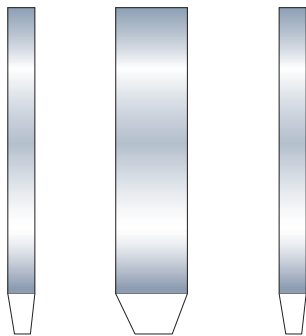
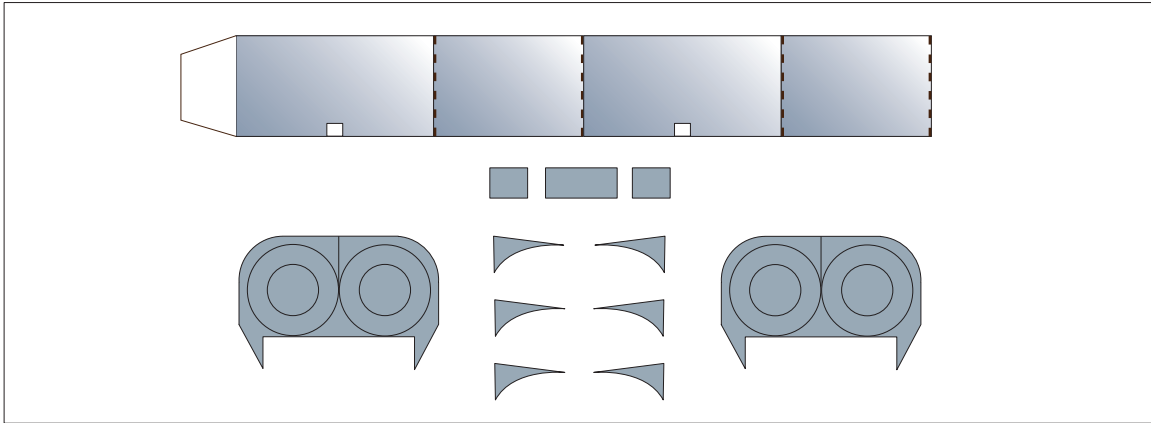
Print on Cardstock (110 lbs)

Revised

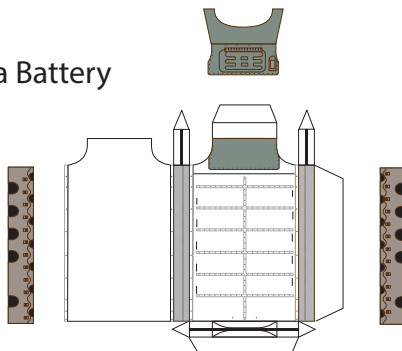


## Mass Simulator

1:100 Scale



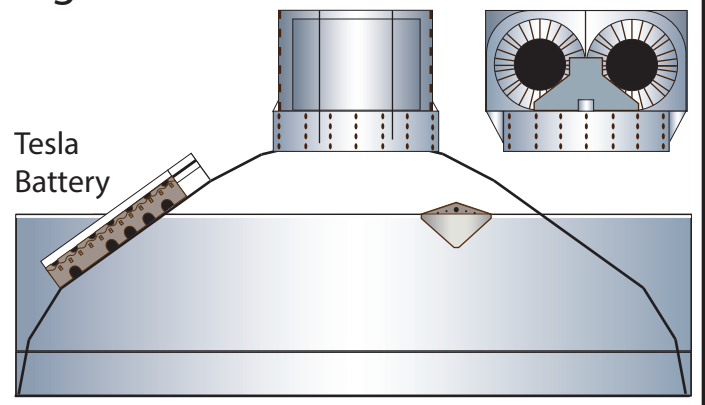
Tesla Battery



Diagram

Side

Front



# SpaceX Starship SN-5

## Back Print





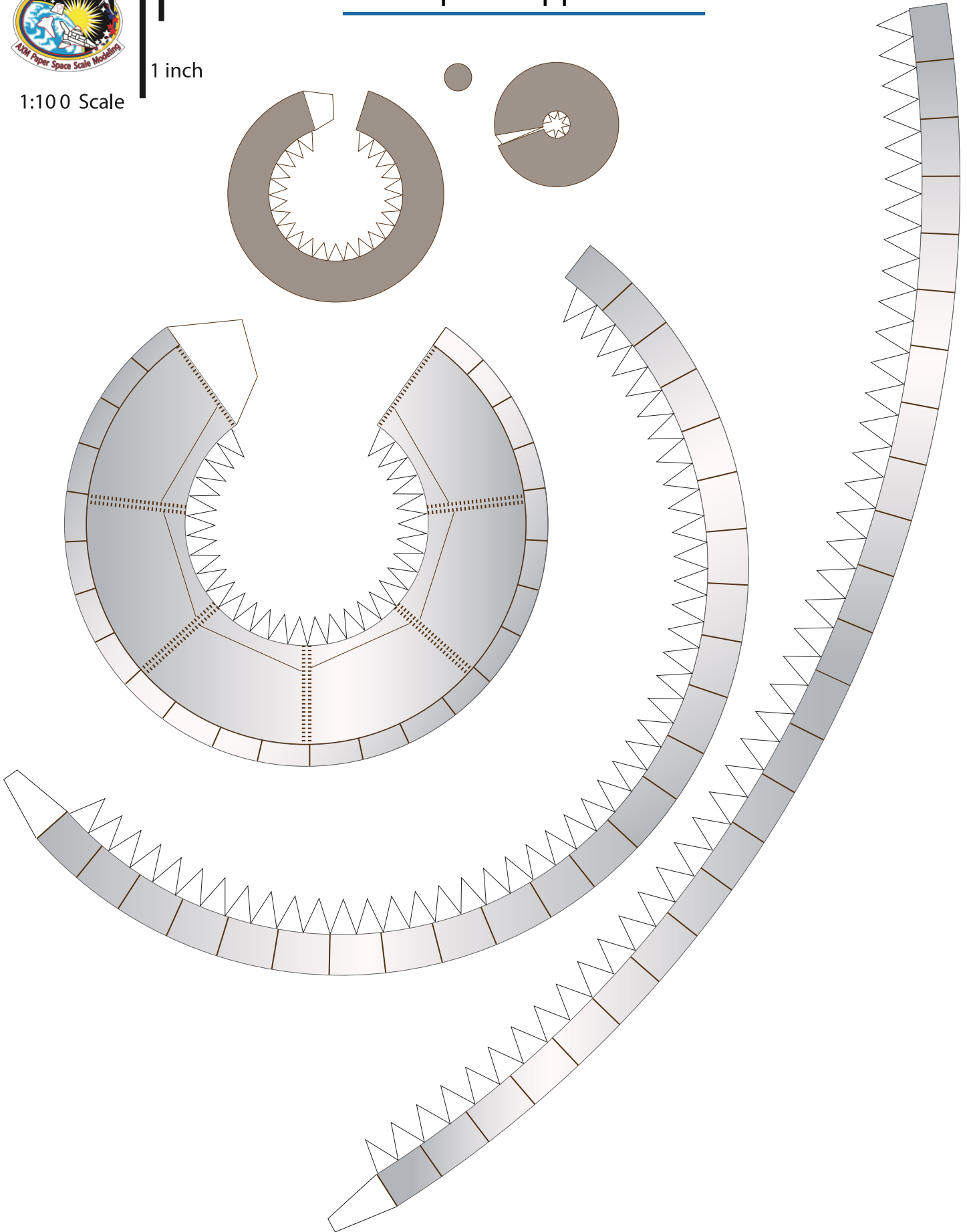
1 cm

1 inch

1:100 Scale

# Starship SN Upper Dome

Print on Cardstock ( 110 lbs)





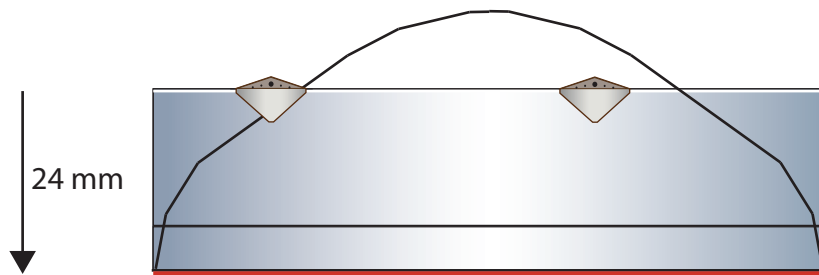
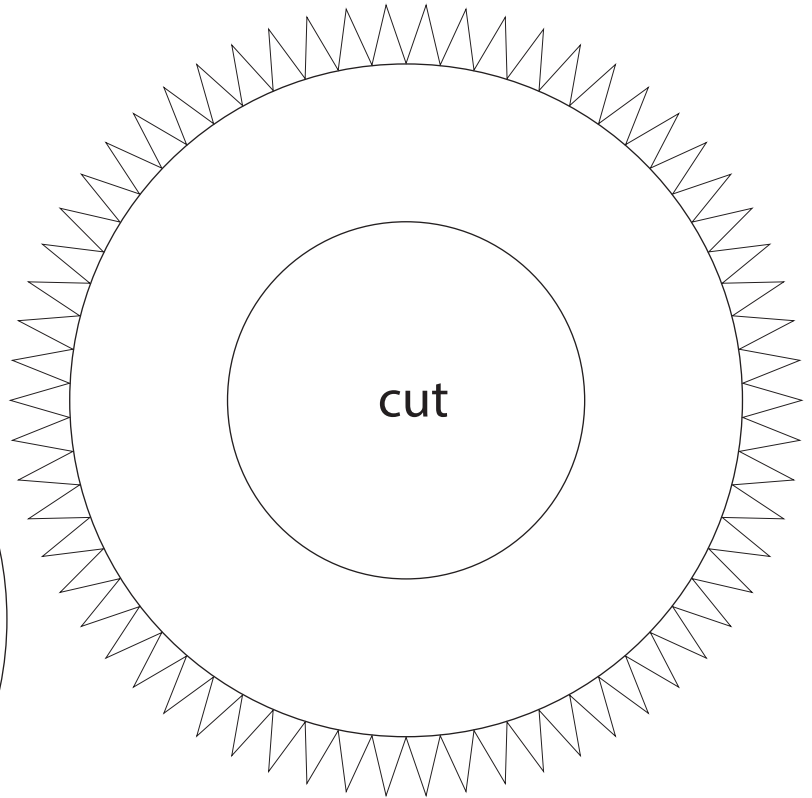
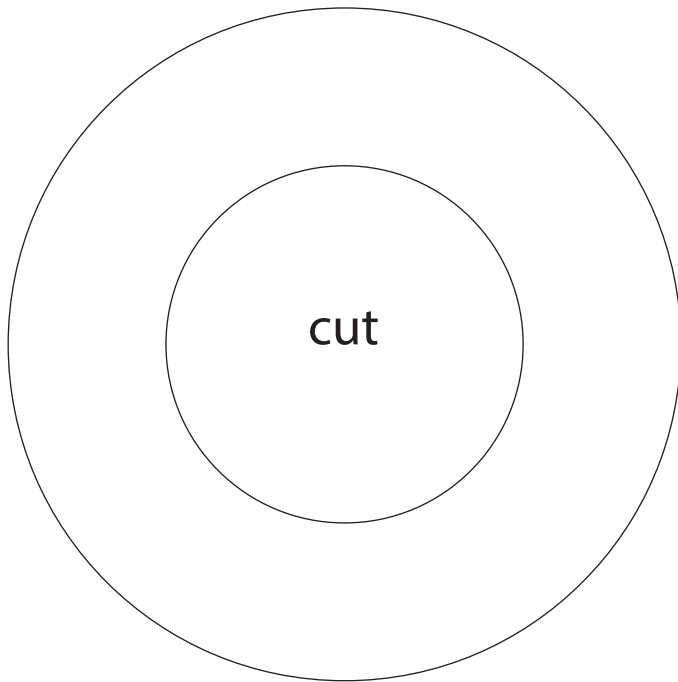
1:100 Scale



# SpaceX Starship SN-5

## Former for upper dome

Print on Cardstock (110 lbs)



### IMPORTANT

Top former is glued 24 mm from top edge of upper body for Starship SN-5 model



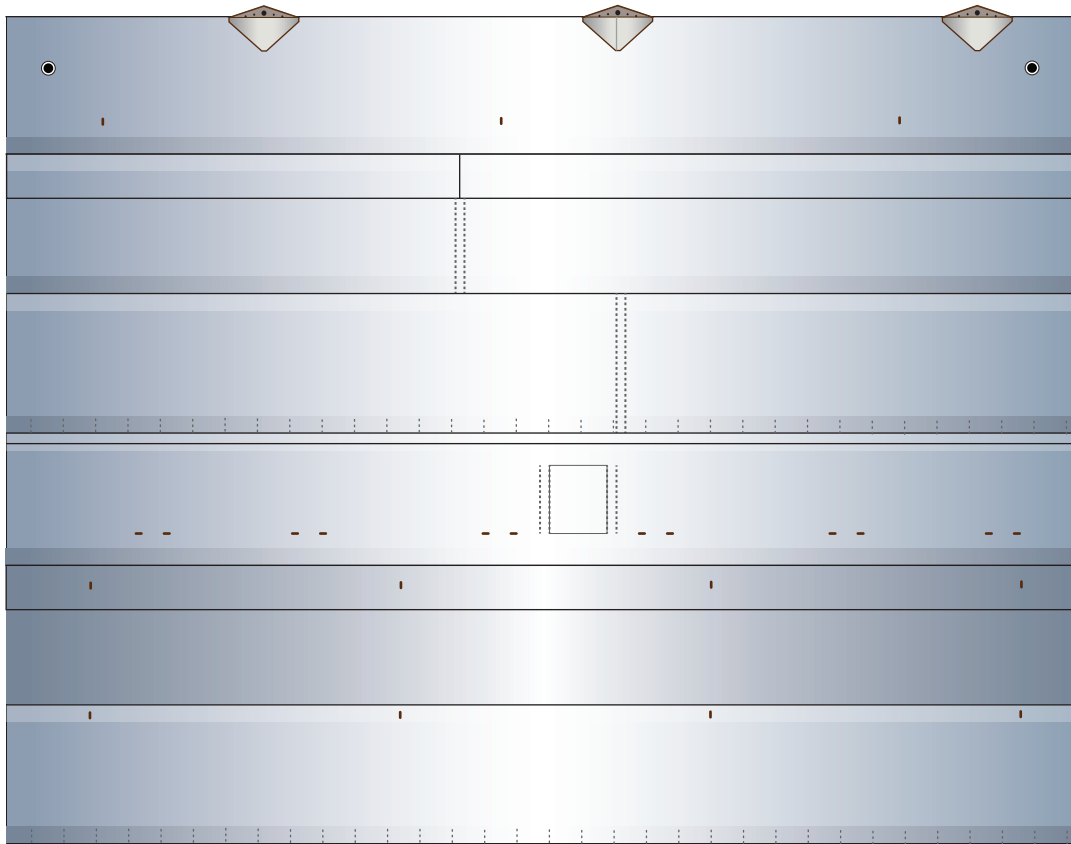
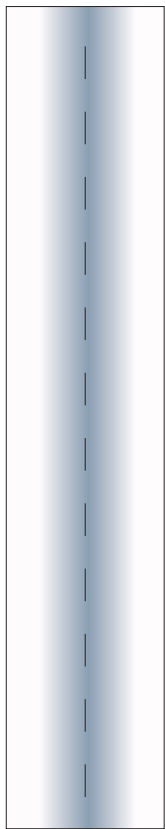
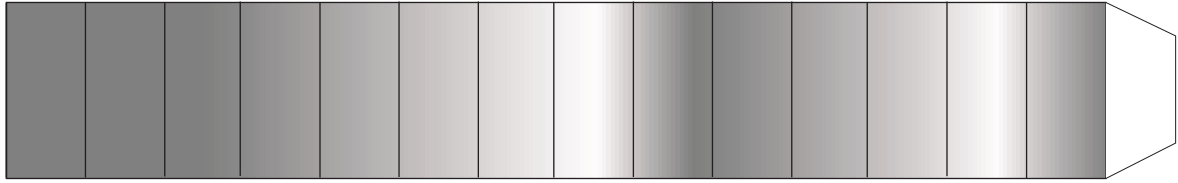
1:100 Scale



# SpaceX Starship SN5

Print on Cardstock (110 lbs)

## Front top





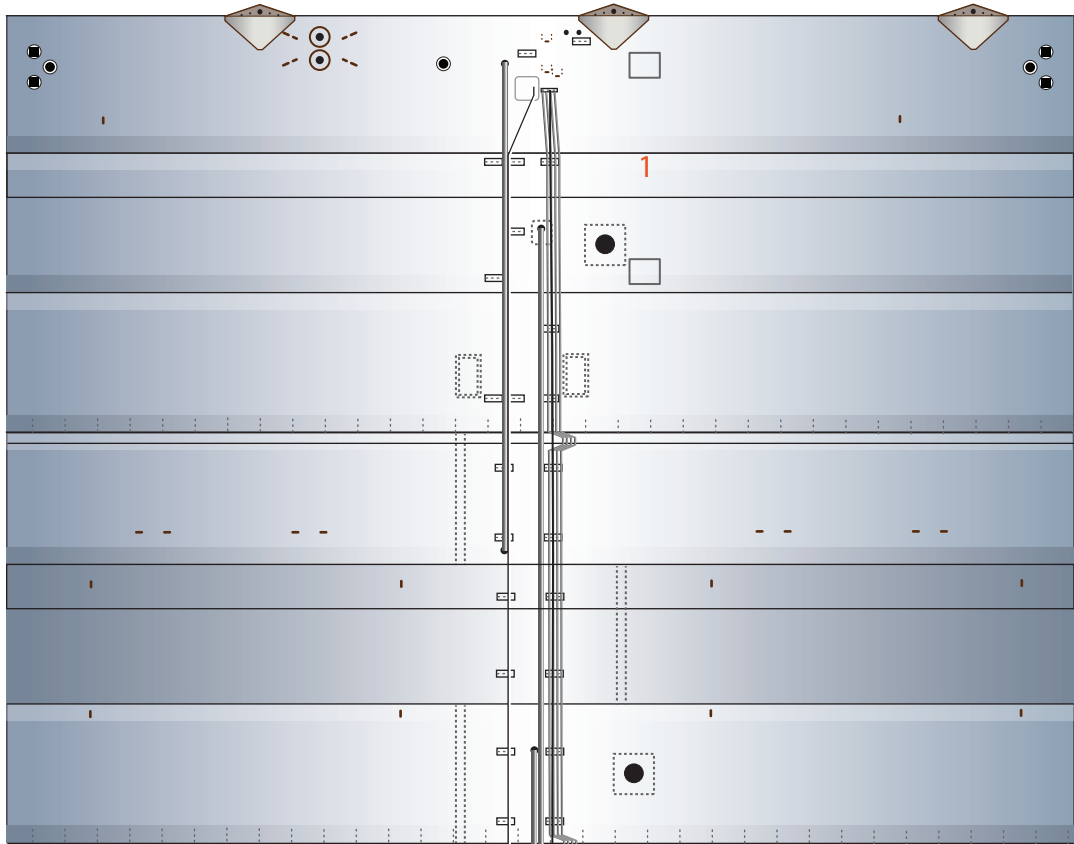
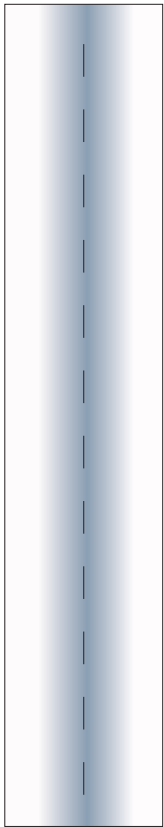
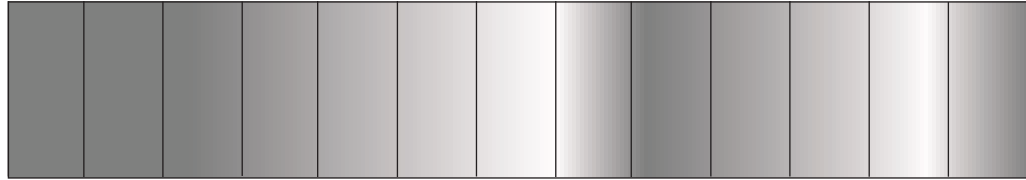
1:100 Scale



# SpaceX Starship SN5

Print on Cardstock (110 lbs)

## Back top







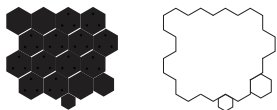
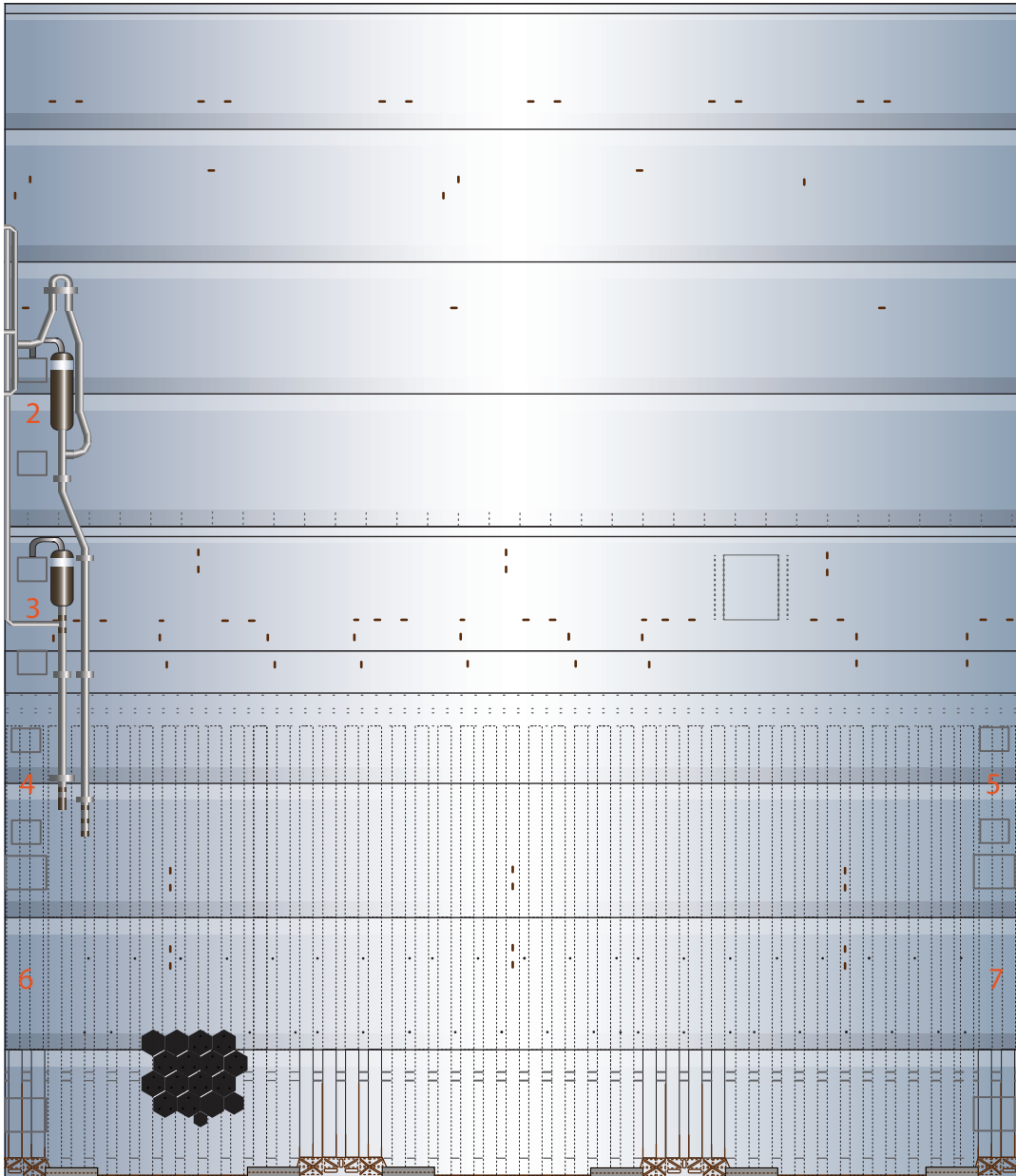
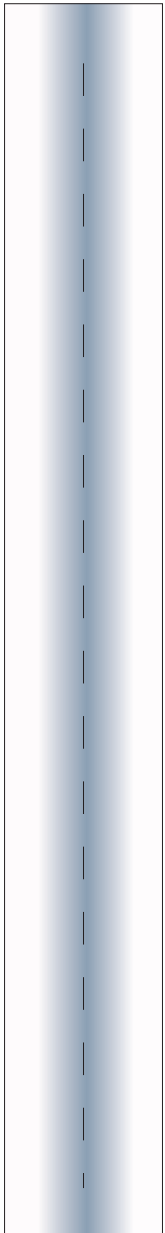
1:100 Scale



# SpaceX Starship SN5

Print on Cardstock (110 lbs)

## Front bottom



-Z



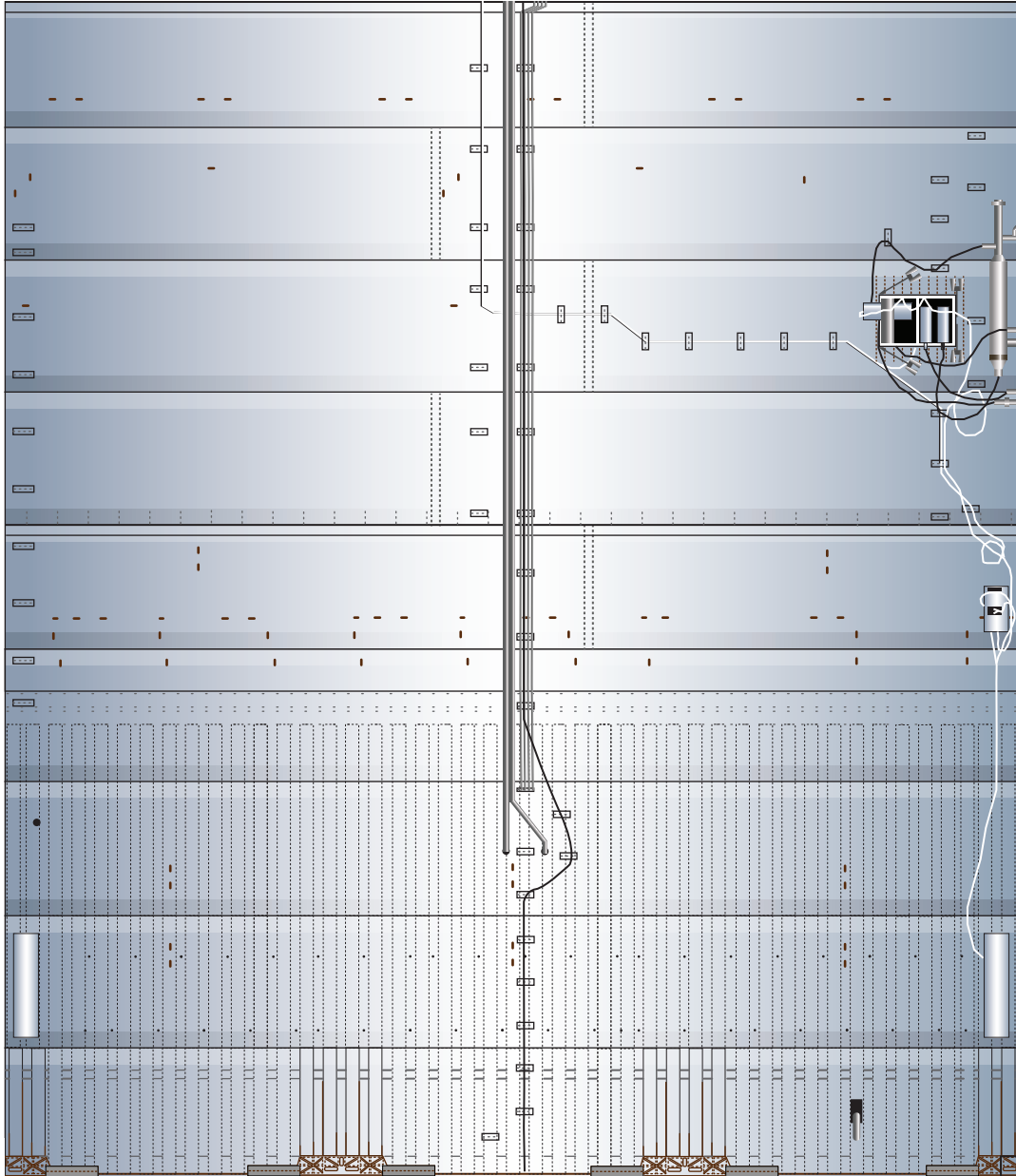
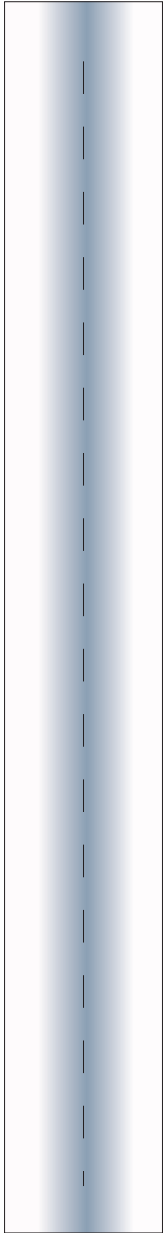
1:100 Scale



# SpaceX Starship SN5

Print on Cardstock (110 lbs)

## Back bottom



+Z

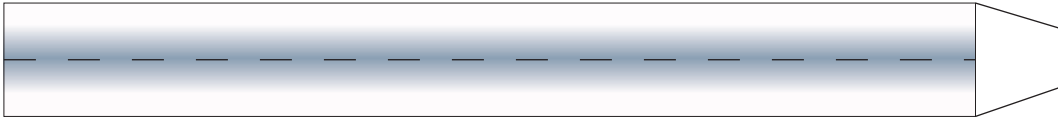


1:100 Scale

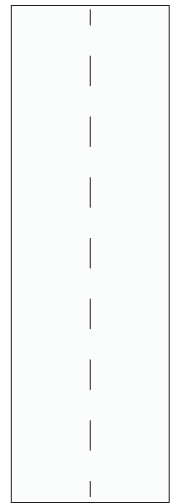
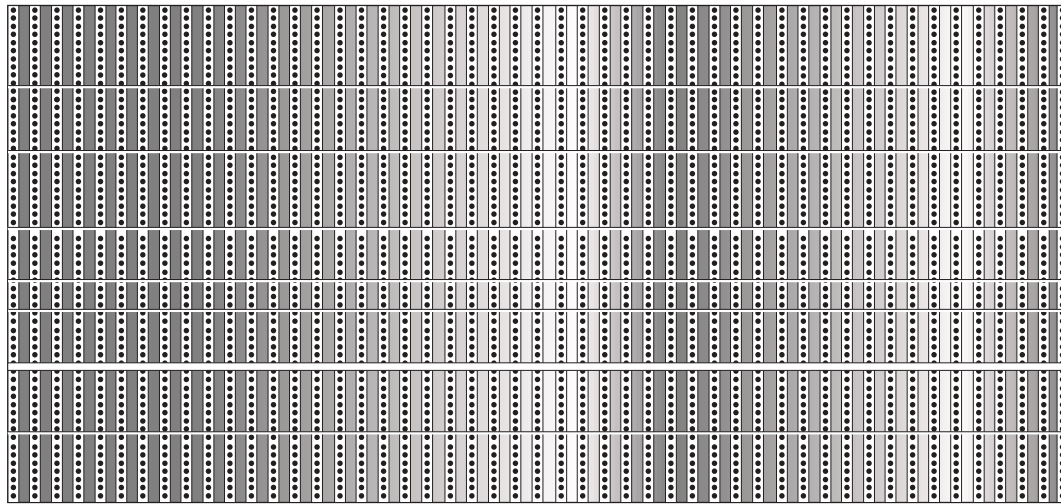
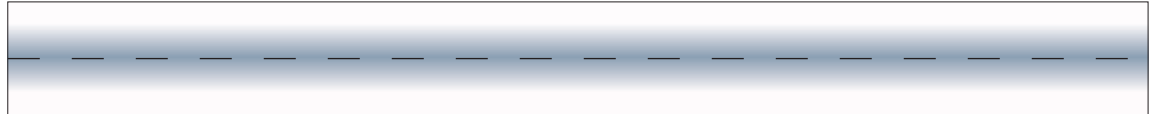


# SpaceX Starship SN5

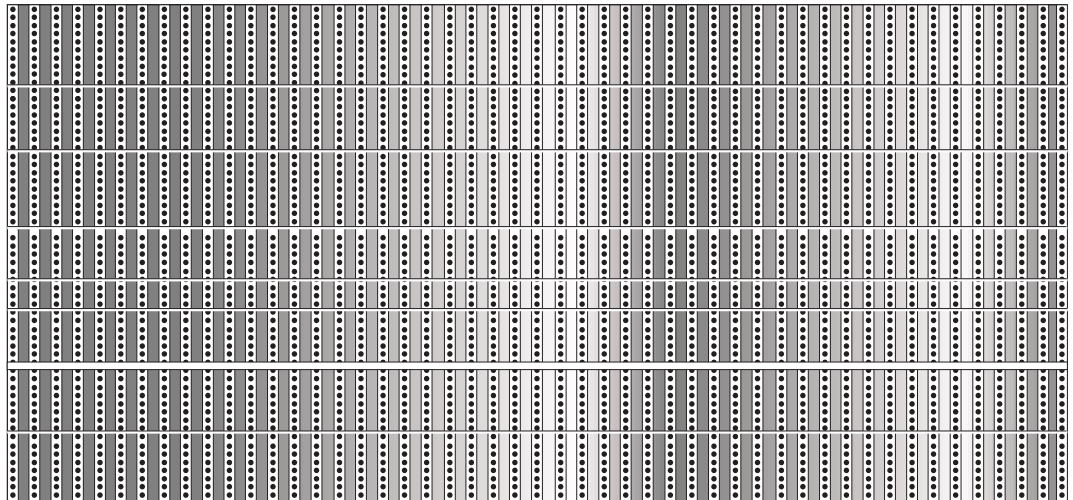
Print on Cardstock (110 lbs)



Connectors for upper and lower body



Engine section interior wall





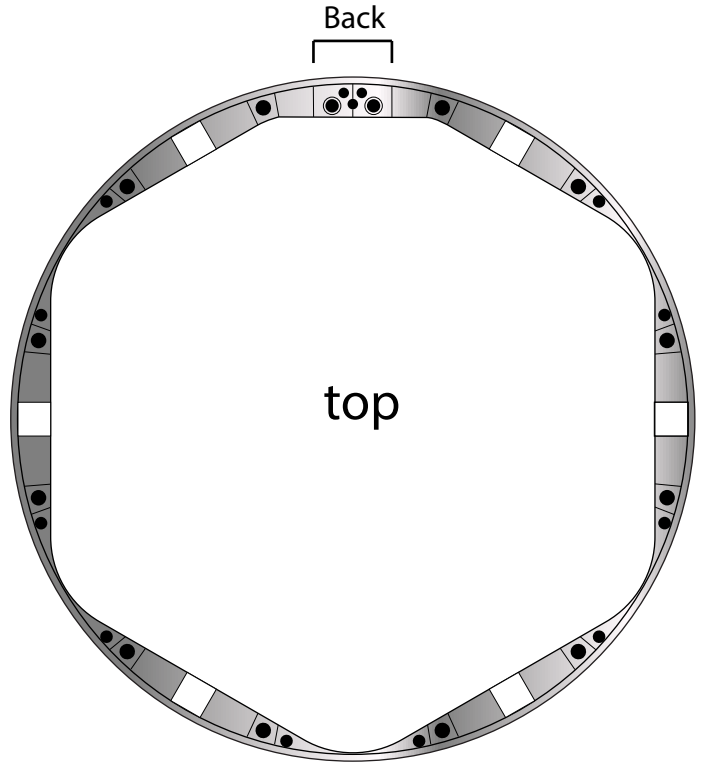
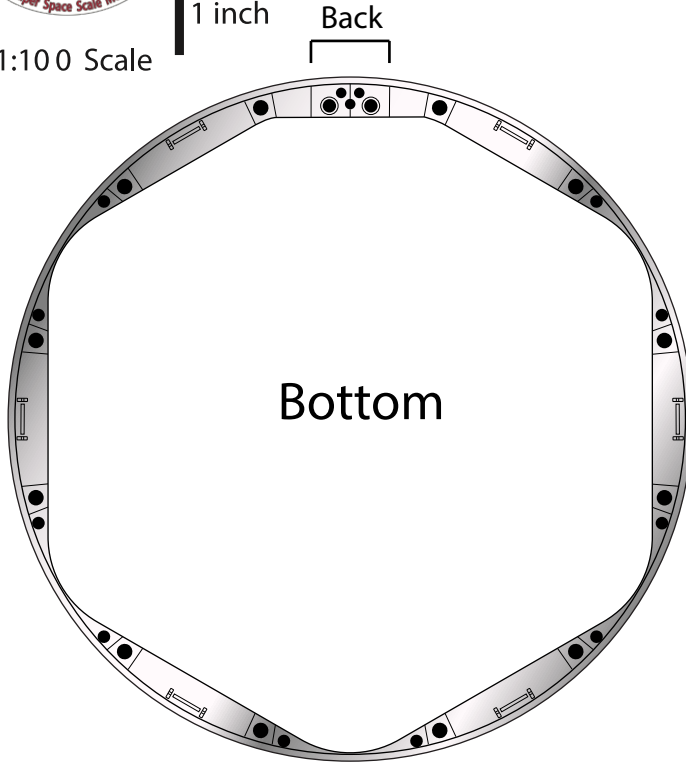
1 cm  
1 inch

# SpaceX Starship SN-5

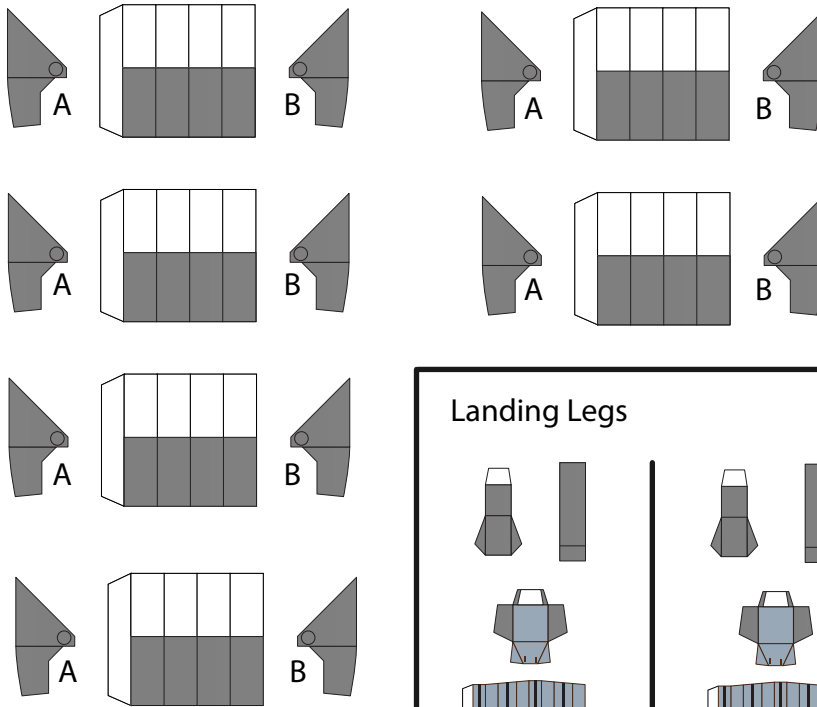
Print on Cardstock (110 lbs)

## Landing Legs

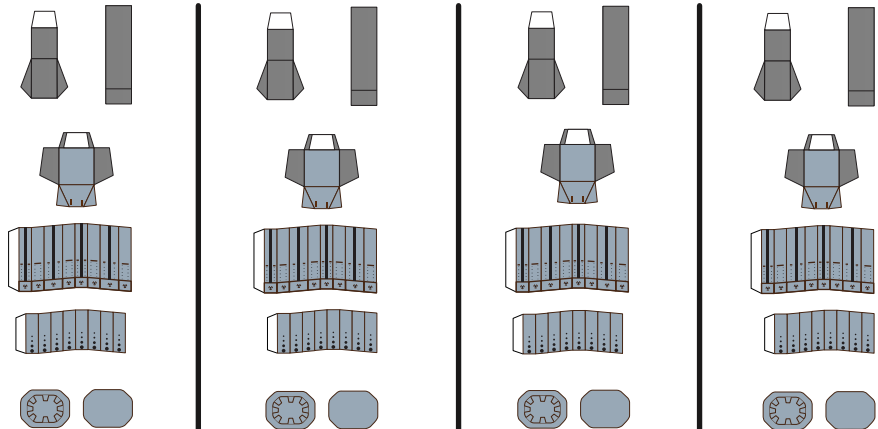
1:100 Scale



### Leg support pillars



### Landing Legs



Use a cottonswab stick (2 mm diameter) and cut 6 segments of 5 mm in length and glue them between parts A and B.



1:100 Scale

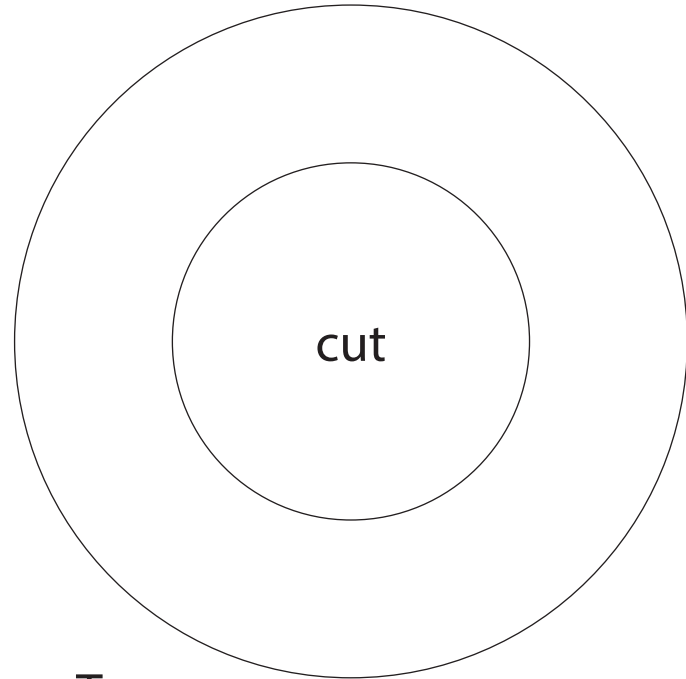


# SpaceX Starship SN5

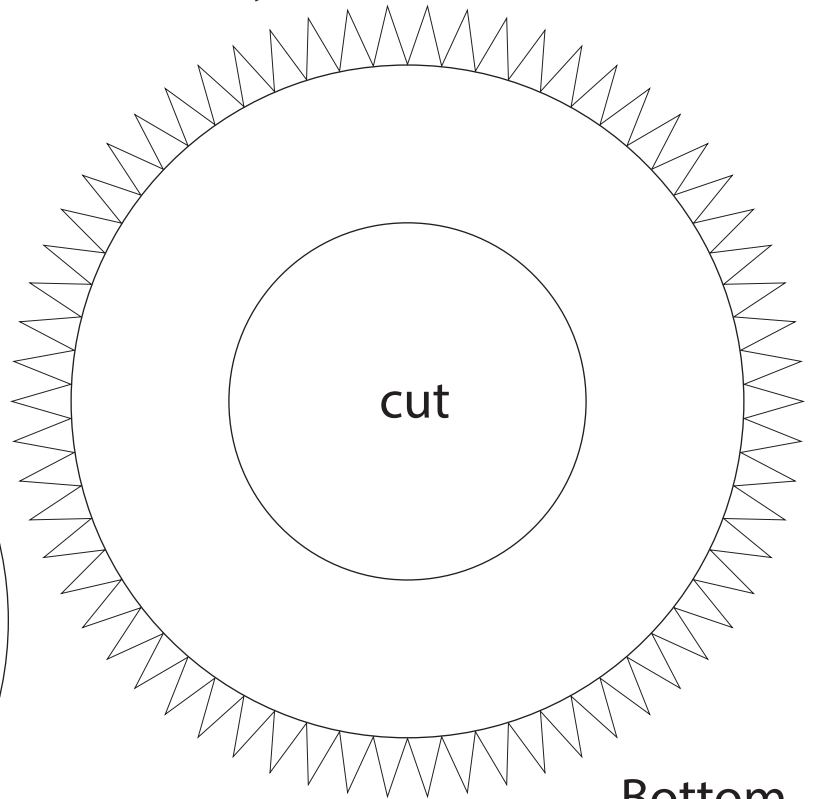
Print on Cardstock (110 lbs)

## Formers for lower body

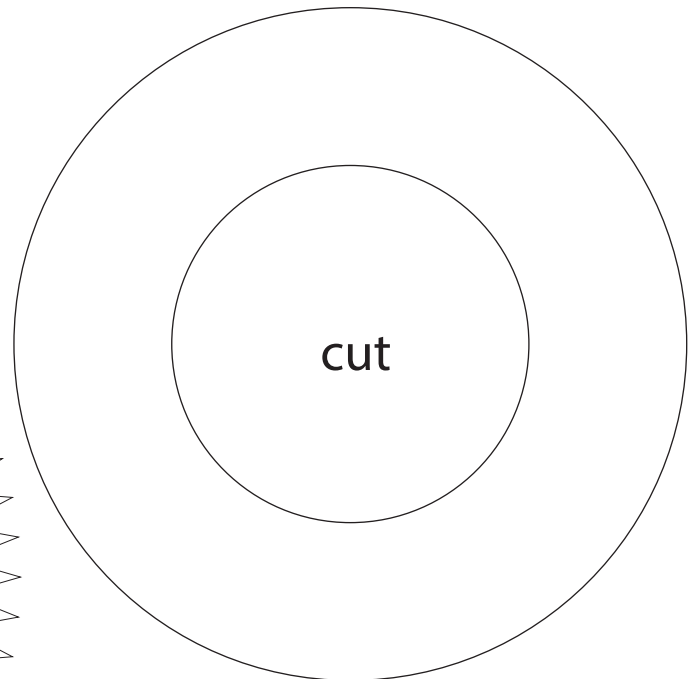
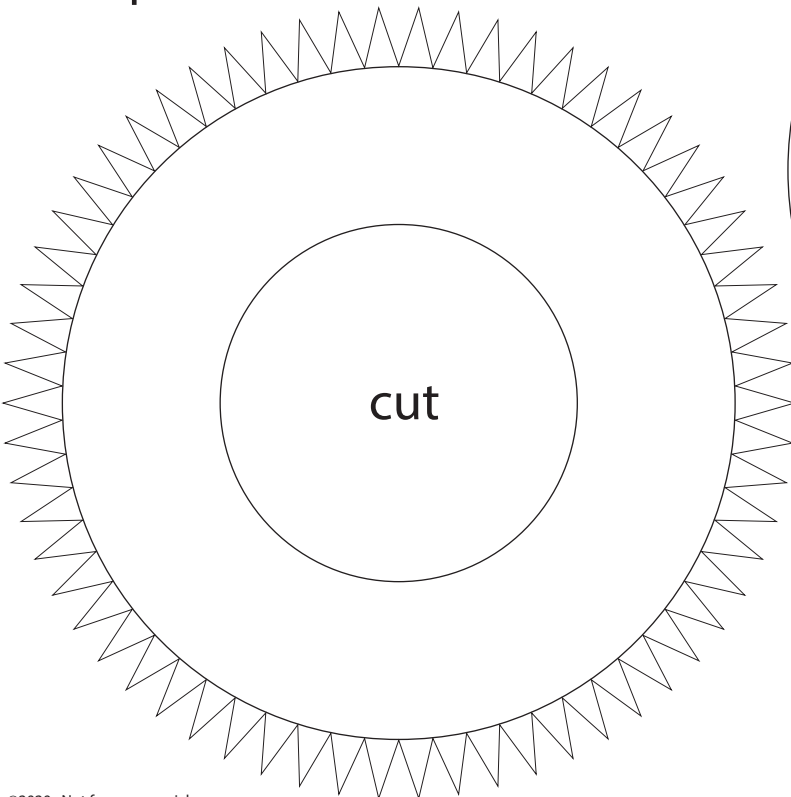
Revised



Top



Bottom



### IMPORTANT

Top former is glued 20 mm from bottom edge of upper body.  
Bottom former is glued 66 mm from bottom edge of lower body.



1 cm

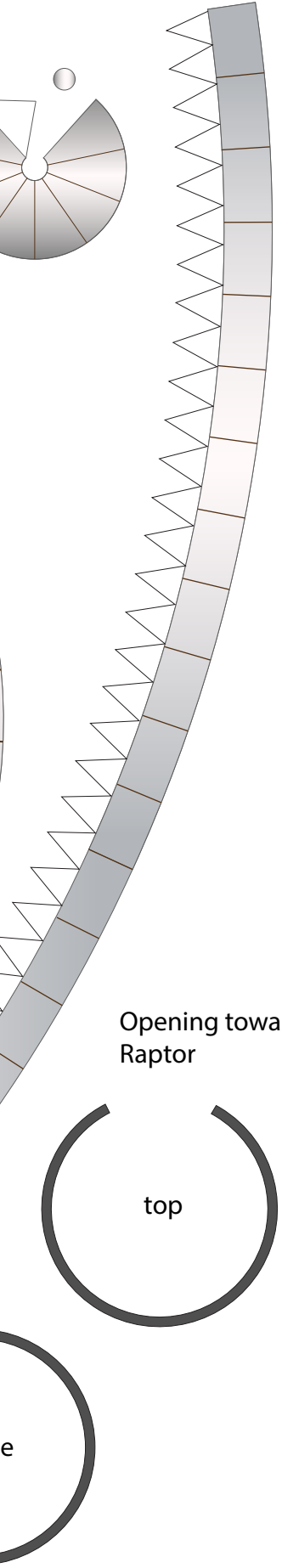
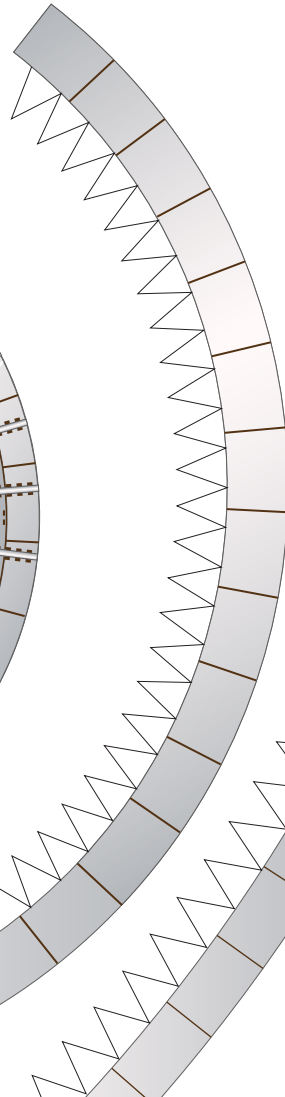
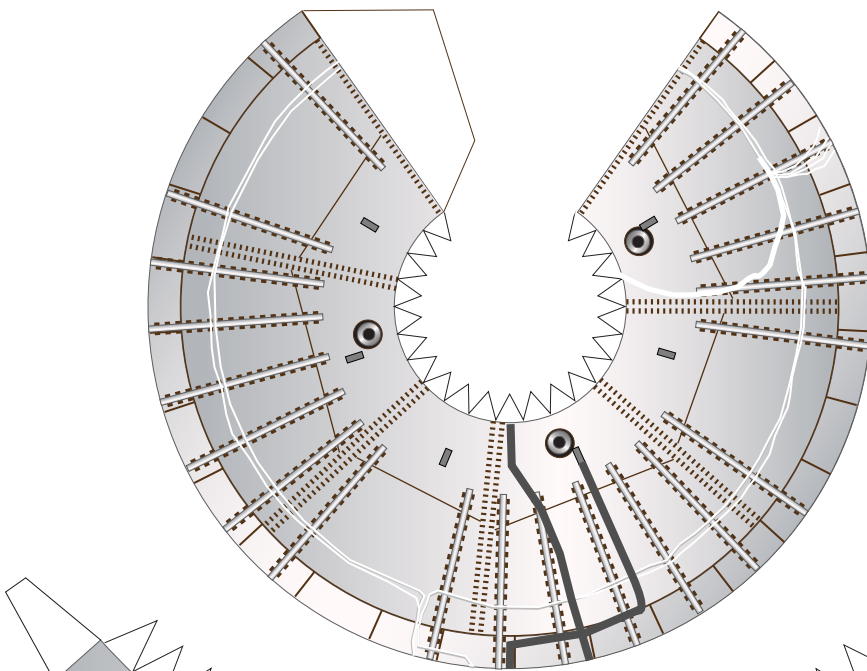
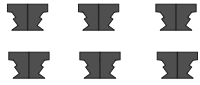
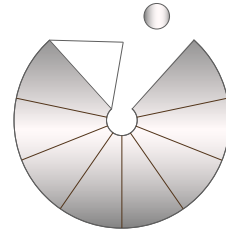
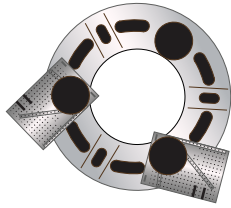
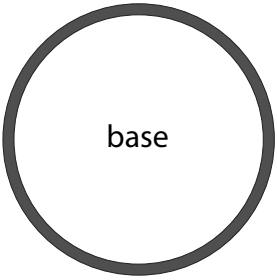
1 inch

1:100 Scale

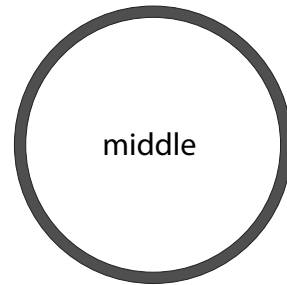
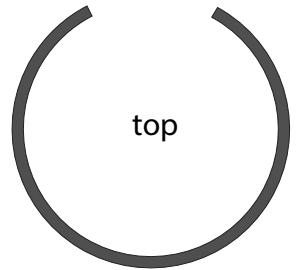
# Starship SN-5 Bulkhead

Print on Cardstock (110 lbs)

Raptor facing aft



Opening towards Raptor





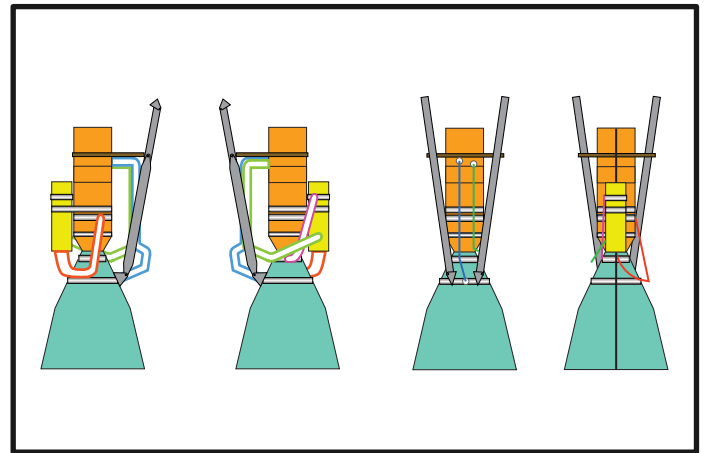
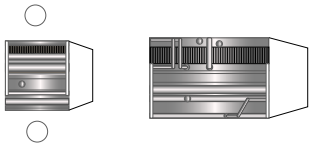
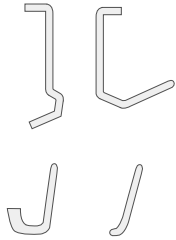
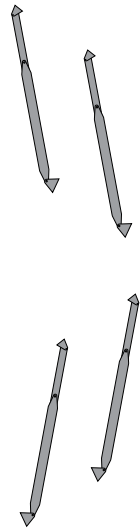
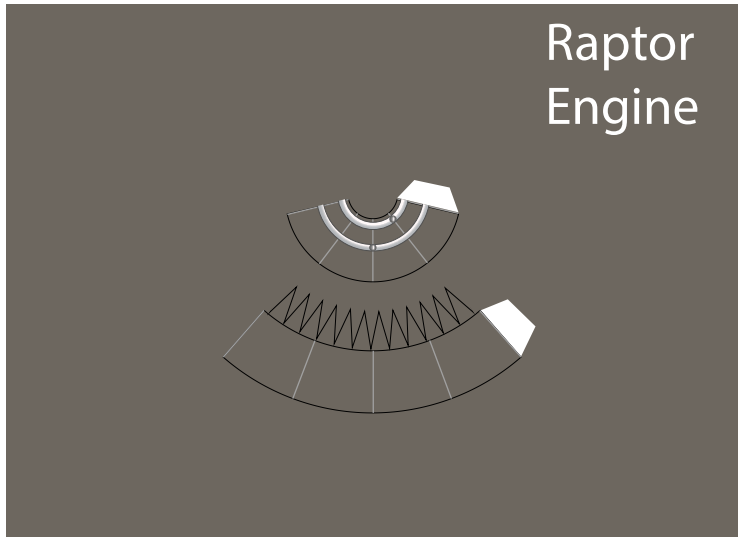
1 cm

1 inch

1:100 Scale

# SpaceX Starship SN5

Print on Cardstock (110 lbs)



## COPVs

